

 Krens & Van Rij
IT Audit en Advies

29 October 2009, Garderen

Future Consistency


*The Proven Method
to Reduce IT Costs*

Theo Krens and Leen van Rij




Copyright © 2009 +31 (0)297 250 465 Krens & Van Rij IT Audit en Advies

Today's Motto



Keep IT Going Keep the Business Going



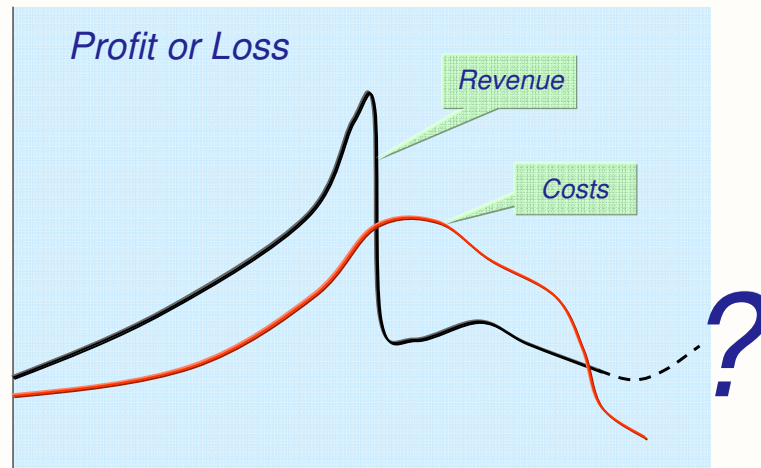
Source: djkennemerik.nl

Future Consistency Krens & Van Rij IT Audit en Advies 2

Today's Business Future Consistency

Will Business Survive?

Cost Savings, Inevitable Solution on Short Notice



Business IT Goals



- *Short time-to-market*
- *Flexibility*
- *Stability*
- *Scalability*
- *Continuous Availability*
- *Integration*
- *Return on Investment*
- *Reducing CO₂ emission*
- *Cost reduction*
- *etc.*

Today's Business IT Goals

Cost Reduction
Zero €
Zero Tolerance



Dilemmas of the IT Board

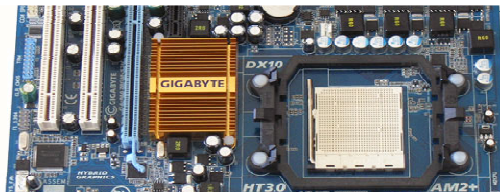
Keep IT Going?

Can we reduce our application landscape to reduce costs?

Continue?

Change?

Replace?

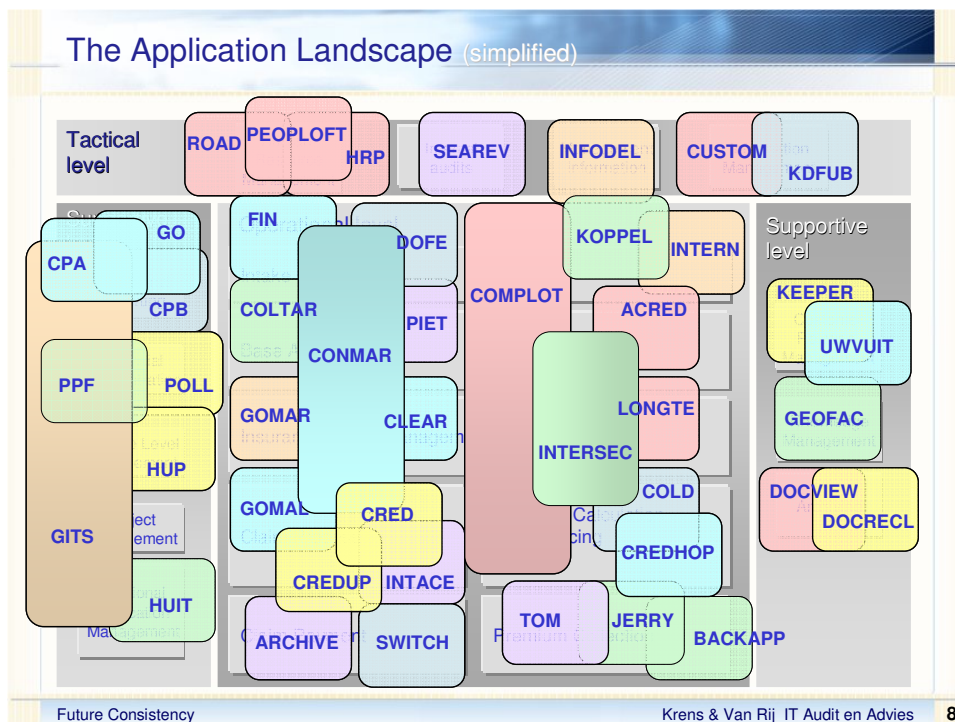
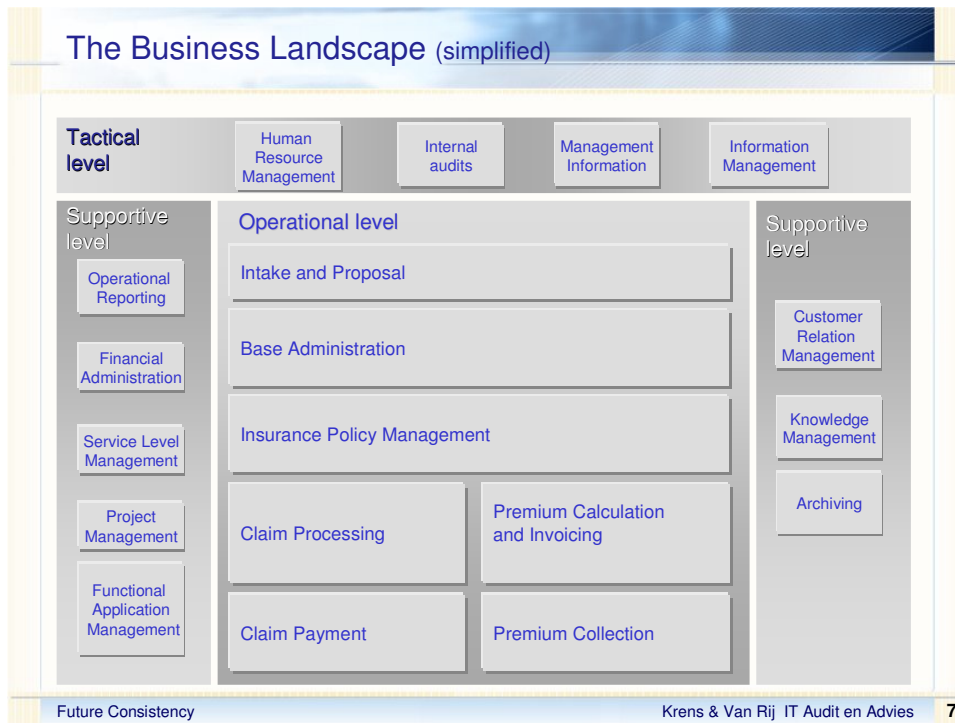


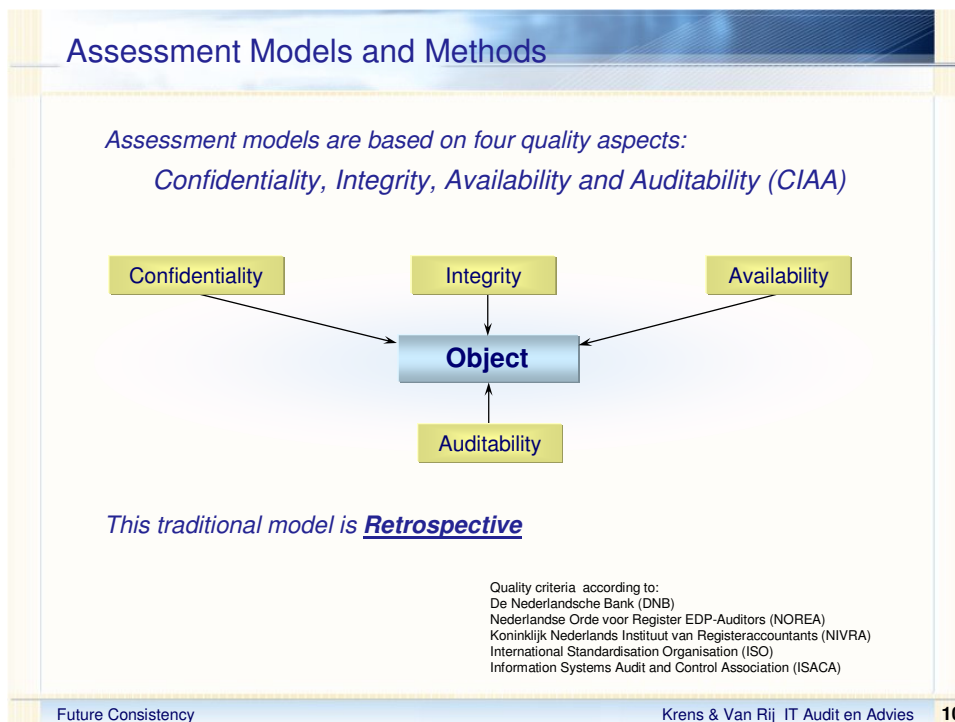
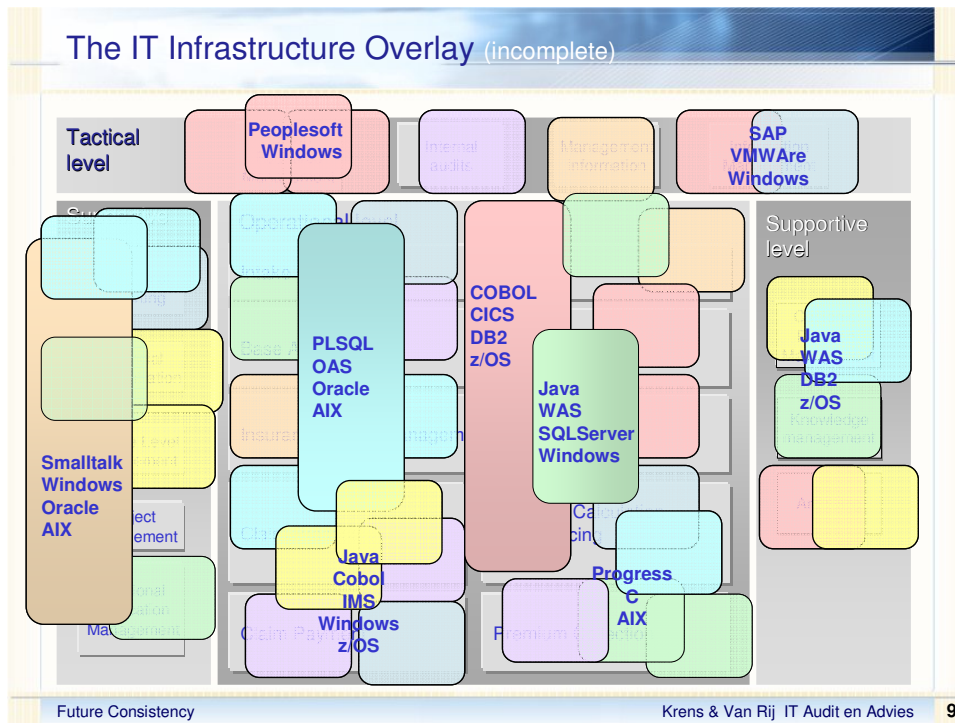
Can we reduce our IT infrastructure keeping up a solid foundation for our application landscape?

Continue?

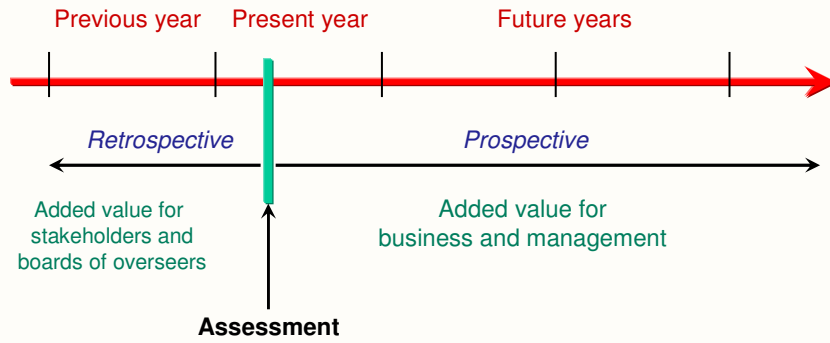
Change?

Replace?





Retrospective versus Prospective Methods

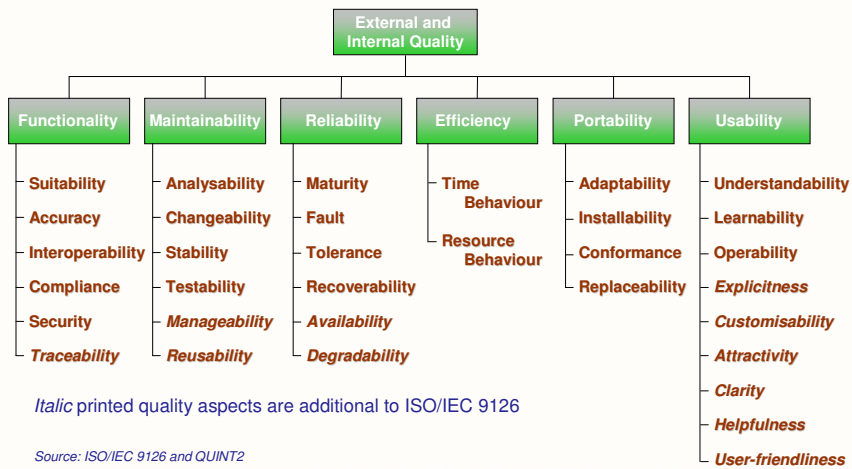


Retrospective methods (audits and reviews) conclude an opinion on a previous period

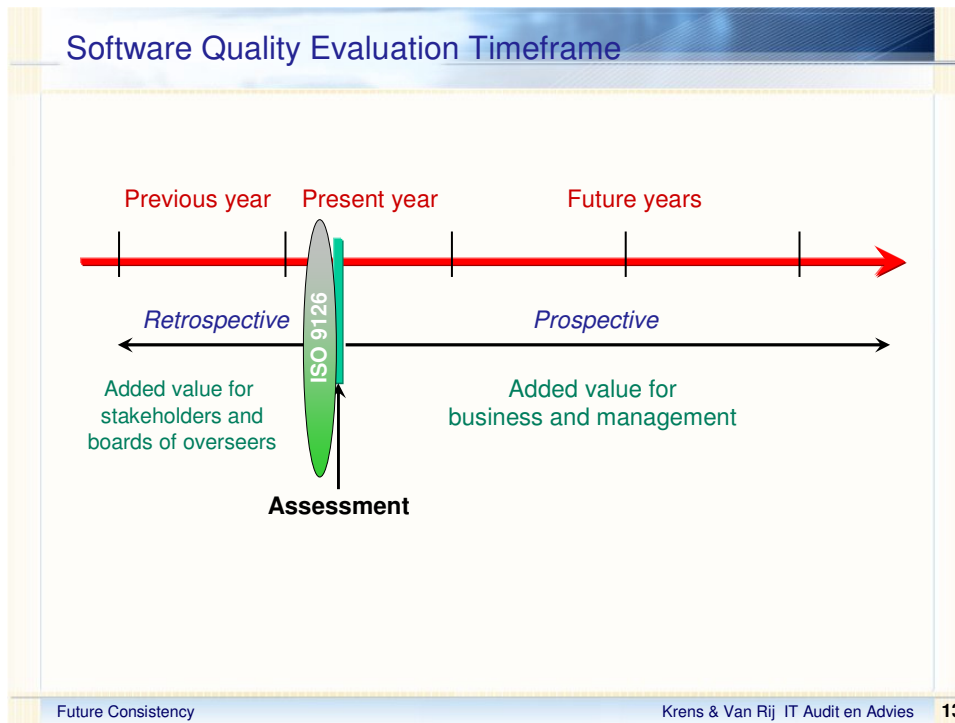
Prospective methods are future oriented and define insight in the future consistency of an object

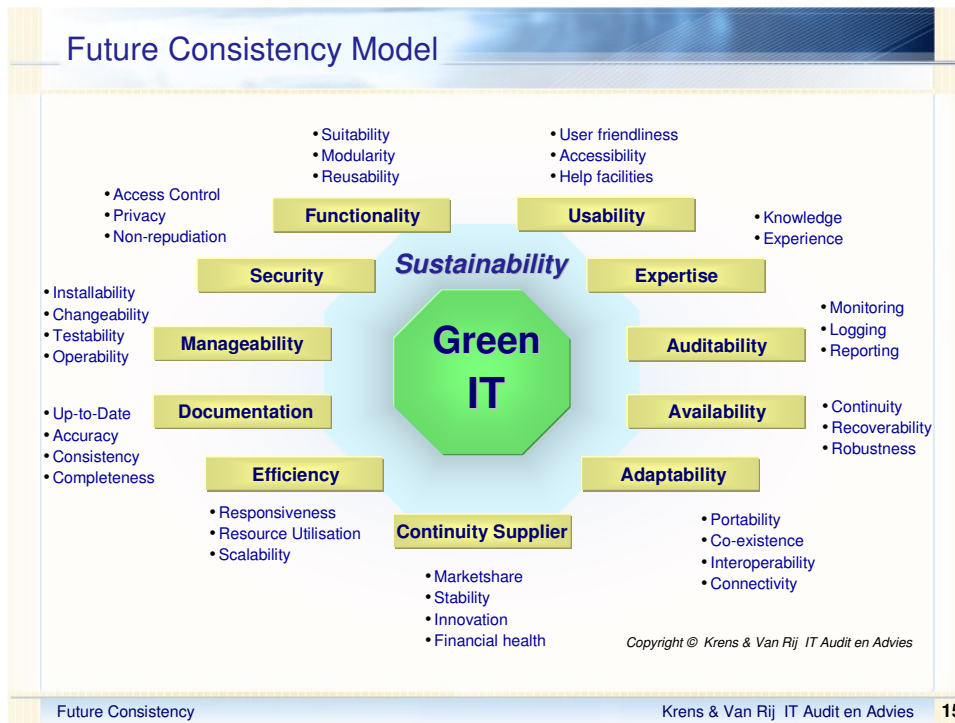
Software Quality Models

ISO/IEC 9126 and QUINT2



Source: ISO/IEC 9126 and QUINT2

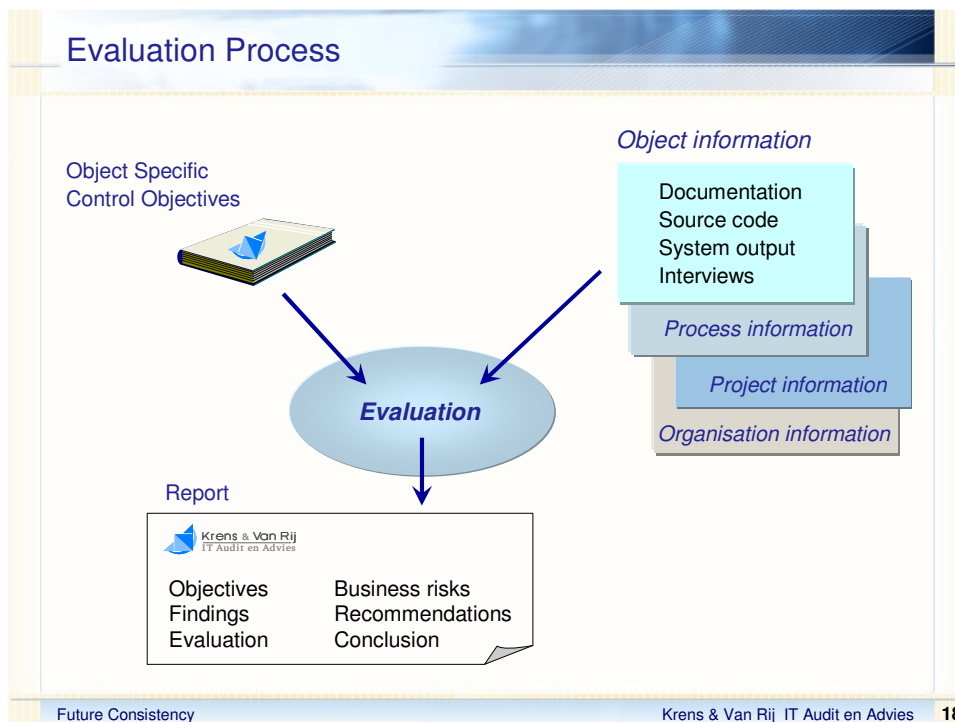
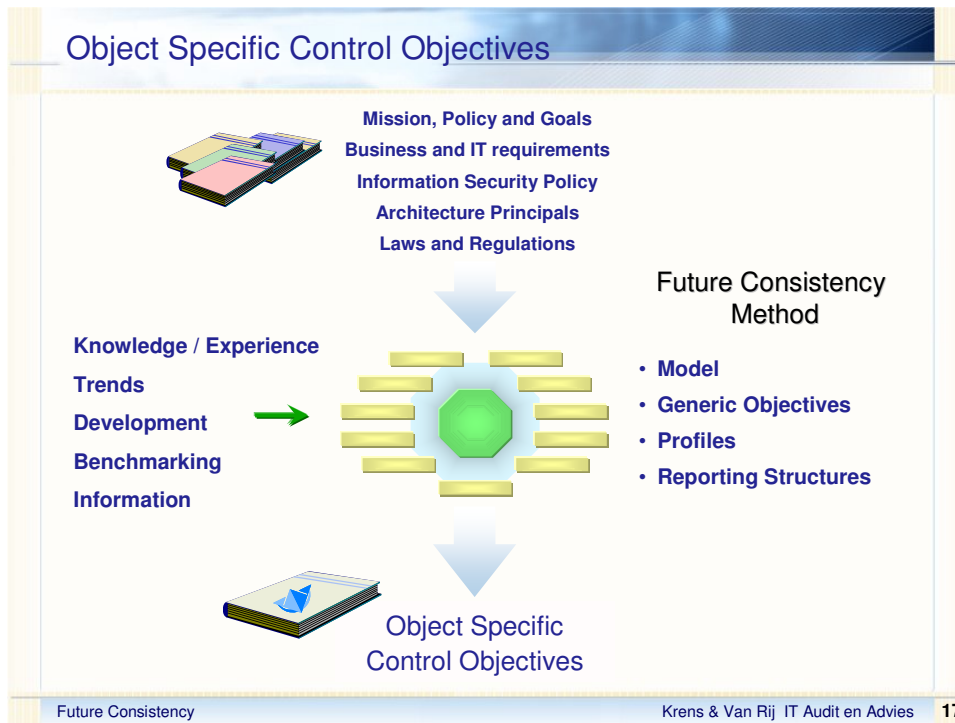


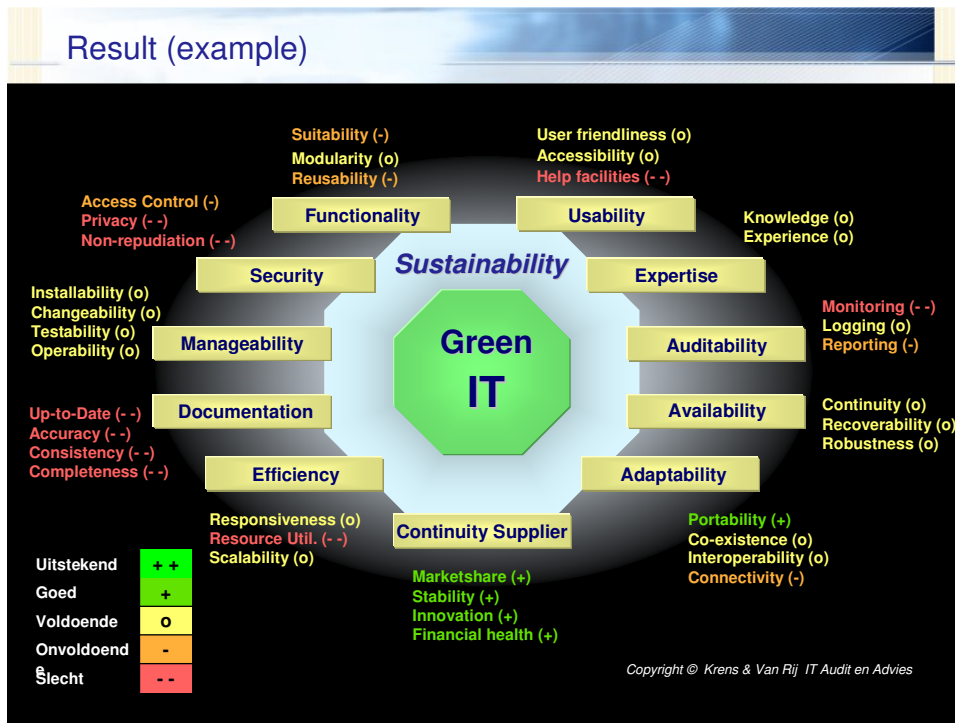


Weighted Criteria Matrix

The weighted criteria define the impact for a specific object. Measures for other objects may be weighted differently resulting in other impacts on future consistency

Secondary Quality Aspect	Mandatory (Yes/No)	Weight factor	Measures	Importancy								
				1	2	3	4	5	6	7		
Suitability												
		7	an up-to-date overview of business and IT requirements									
Yes		10	up-to-date, completeness and correctness of the requirements									
		7	the lifecycle and status of the requirements									
Yes		8	compliance with vision, mission and policy									
Yes		8	compliance with architectural principles and guidelines									
		4	complete and correct implementation on strategical, tactical and operational level									
		7									





Cost Savings and CO₂ Reduction (example)

	€ Savings	CO ₂ Reduction
Functionality	60 - 80 % development cost (0,7 Consultant € 105.000 + € 5.250 cost / year)	1.400 Kg mouse clicks/year 7.000 Kg / Cons. / year
Efficiency	75 - 95 % servers (€ 3.500 per server / year)	3000 Kg / server / year
Usability	40 - 60 % working time (500 hour / employee, 100 mouse clicks/hour € 25.000 / year)	100 Kg mouse clicks / year 3.000 Kg / user / year
Adaptability	75 - 95 % migration cost (0,8 Cons. € 120.000 + € 6.000 / year)	8.000 Kg / cons. / year
Auditability	5 - 30 % working time (100 hour / empl. € 5.000 + € 400 / year)	20 Kg mouse clicks / year 600 Kg / user / year
Manageability	20 - 40 % operational effort (400 hour/empl. € 20.000 + € 1.600 / year)	80 Kg mouse clicks / year 2.400 Kg / user / year
Expertise	10 - 30 % external hiring (0,2 Consultant € 30.000 + € 1.500 / year)	1.400 Kg mouse clicks/year 2.000 Kg / Cons. / year

Car kilometre = 135 mg / km 1 mouse click = 2 mg Office heating = 30kg / m² / year

Future Consistency Krens & Van Rij IT Audit en Advies 20

The Eleven Primary Questions

Functionality

- *Is flexibel invulling te geven aan business- en ICT-eisen en -wensen?*

Security

- *Is invulling te geven aan de beveiligingseisen vanuit de business en wet- en regelgeving?*

Availability

- *Is een continue dienstverlening aan de business gewaarborgd?*

Manageability

- *Wordt beheer en onderhoud op een gestructureerde en controleerbare wijze uitgevoerd?*

Usability

- *Zijn de geboden faciliteiten op een eenvoudige manier aan te leren, te begrijpen en te gebruiken?*

Continuity Supplier

- *Is de continuïteit van uw toeleveranciers (intern en extern) gewaarborgd?*

Expertise

- *Is binnen uw organisatie de juiste kennis en ervaring aanwezig?*

Efficiency

- *Worden de benodigde resources optimaal gebruikt en zijn deze schaalbaar?*

Auditability

- *Kunnen kritieke activiteiten worden gevolgd, vastgelegd en gerapporteerd?*

Adaptability

- *Kunnen de geboden faciliteiten eenvoudig worden aangepast voor verschillende omgevingen?*

Documentation

- *Is de documentatie volledig en up-to-date?*

Customers Quotes

“By clearly stating what has already been achieved and what is missing, the results of the review become comprehensive and meaningful. The findings provide us with valuable suggestions to improve our infrastructure.”

“The Krens & Van Rij Future Consistency Model proved to be a clearly structured, comprehensive and objective basis for assessing the future consistency of our new infrastructure.”

“Based on the Krens & Van Rij Future Consistency Model, the current project status was systematically determined in all its aspects.”

“It is the well balanced and objective view the method provides that enables the auditors to give a reliable prediction for the success (or failure) of the project and its impact on future consistency. As far as our personal experience with other methods is concerned, the Krens & Van Rij method is the first one that delivers such results.”

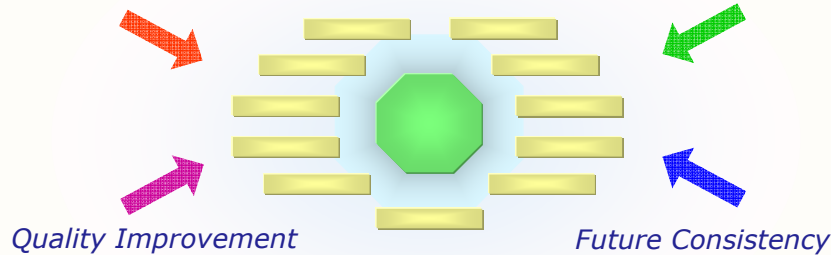
Summary



Keep IT Going

Cost Reduction

Sustainability



Door een toekomstvastheidreview loopt u een zeer hoog risico een duidelijk antwoord te krijgen op de vraag of en in hoeverre uw IT Toekomstvast en Duurzaam is en waar u drastisch kunt **Besparen**.

Contact

Krens & Van Rij IT Audit en Advies
Parel 33
3641 XM Mijdrecht
The Netherlands



Krens & Van Rij
IT Audit en Advies

Tel. +31 (0) 297 250 465
Fax. +31 (0) 297 250 466
Internet: www.krensvanrij.com
Email: info@krensvanrij.com

L.N. van Rij
GSM: +31 (0) 6 4673 1253 email: lvanrij@krensvanrij.com

T.F.J. Krens
GSM: +31 (0) 6 4673 1254 email: tkrens@krensvanrij.com